

**4 White Horse Close**  
**Herford, SG14 2FJ**  
**Guide price £1,350,000**







## 4 White Horse Close Hertford, SG14 2FJ

SET BEHIND GATES WITHIN THIS PRIVATE DEVELOPMENT IS THIS EXCEPTIONAL BEAUTIFULLY PROPORTIONED FIVE-BEDROOM HOME OFFERING HIGH-QUALITY, SPACIOUS FAMILY ACCOMMODATION IN THE PICTURESQUE VILLAGE OF HERTINGFORDBURY.

Set in the heart of the quiet village in a picturesque location, the townhouses have been carefully designed, with a traditional brick facade, to blend in with the surrounding period properties. Each home is arranged over four floors, with flexible layouts to suit the needs of contemporary living. The generously-sized rooms have high ceilings and handsome traditional sash windows.

In addition to the eight townhouses, the Close has an unusually large and stylish two-bedroom detached home. The Close is set behind electric gates and has undercover parking.

Considerable care and attention to detail has been devoted to the five-bedroom townhouses, each offering over 2,768.4 sq. ft. of living space. The basement has been cleverly thought out to maximise space and light, with a large family/games room to the rear, a bedroom with a Jack and Jill shower room, a utility room and a large understairs storage cupboard. The flexible space can be used by the family or could become a self-contained guest suite.

The whole of the ground floor is taken up with an extensive open plan kitchen/dining/living and utility space and a cloakroom in the hallway. The contemporary kitchen has fully integrated Siemens appliances and the sliding doors leading onto the landscaped, secluded garden make it ideal for entertaining.

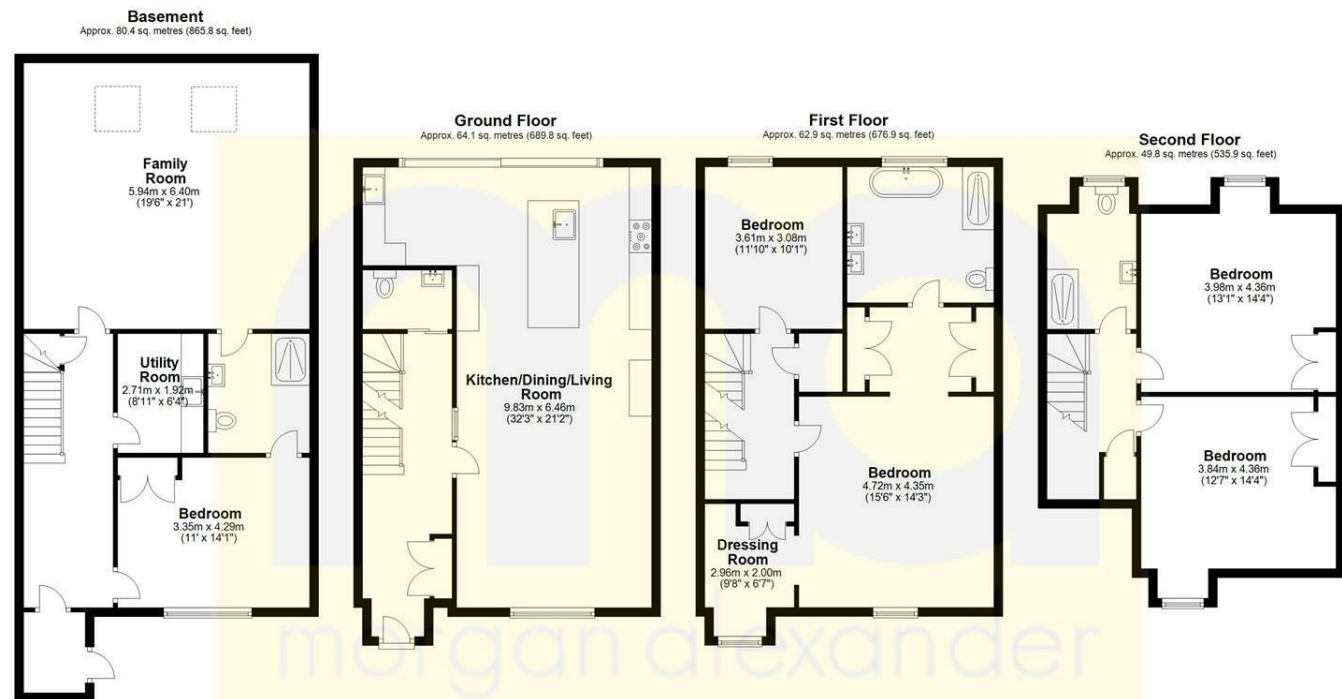
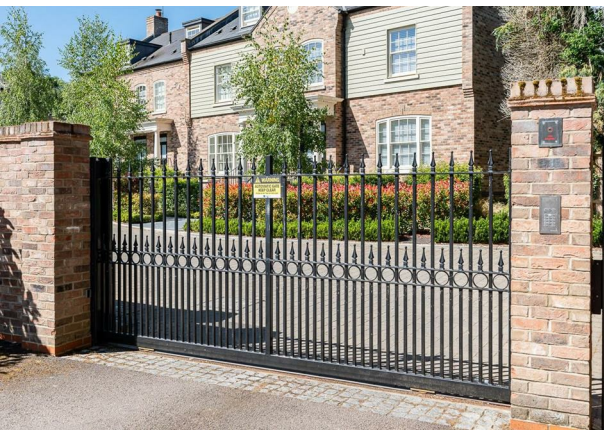
The master bedroom, which has two dressing rooms and a sumptuous en suite, plus a further double bedroom/large office and a large storage cupboard are on the first floor, while a family shower room serves the two double bedrooms on the top floor.

Undercover parking for two cars with electric car charging point allows the development to remain car free so that residents can enjoy the landscaped communal gardens.





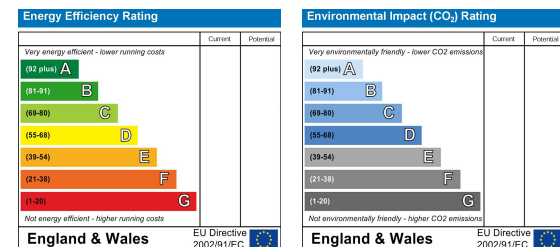




Total area: approx. 257.2 sq. metres (2768.4 sq. feet)

FOR ILLUSTRATIVE PURPOSES ONLY. NOT TO SCALE  
Whilst every attempt has been made to ensure the accuracy of the floor plan shown, all measurements, positioning, fixtures, features, fittings and any other data shown are approximate interpretation for illustrative purposes only and are not to scale. No responsibility is taken for any error, omission, miss-statement or use of data shown.

Property marketing provided by [www.matthewkyle.co.uk](http://www.matthewkyle.co.uk)



#### PROPERTY MISDESCRIPTIONS ACT 1991

The agent has not tested any apparatus, equipment, fixtures and fittings, or services, so cannot verify that they are in working order or fit for their purpose or within ownership of the seller, therefore the buyer must assume the information given is incorrect. References to the Tenure of the property are based on information supplied by the Vendor. The agents have not had sight of the title documents. The buyer is advised to obtain verification from their Solicitor. The measurements supplied are for general guidance and as such must not be relied on as fact. Nothing concerning the type of construction or the condition of the structure is to be implied from the photograph of the property. The sales particulars may change in the course of time, and any interested party is advised to make a final inspection of the property prior to exchange of contracts.

[morgan-alexander.co.uk](http://morgan-alexander.co.uk)



40 Castle Street, Hertford, Herts, SG14 1HH  
Tel: 01992 248028  
[westley@morgan-alexander.co.uk](mailto:westley@morgan-alexander.co.uk)