

**28 Fallow Rise**  
**Herford, SG13 7NL**  
**Offers in excess of £279,995**







## 28 Fallow Rise Hertford, SG13 7NL

A beautifully presented two-bedroom first-floor apartment, situated within this sought-after development, just a short walk from Hertford East mainline station and the town centre.

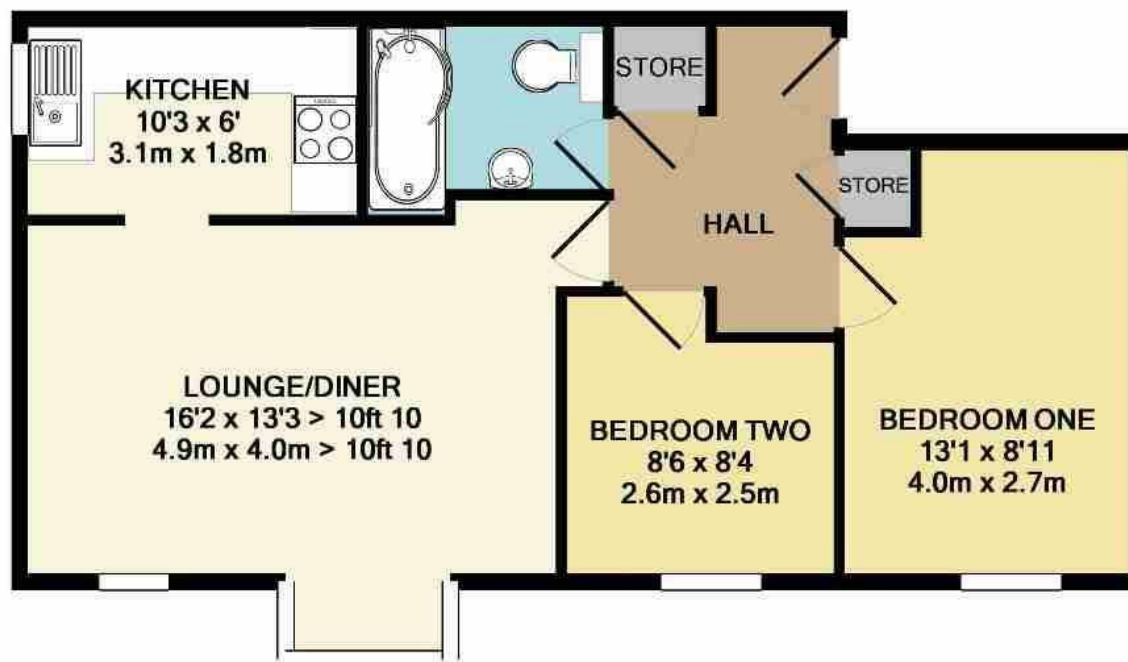
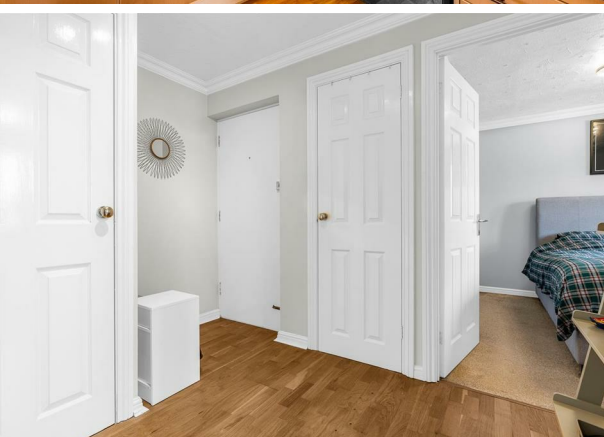
The property boasts generous living space and is finished to a high specification throughout.

The accommodation comprises a communal entrance, a welcoming hallway, a bright and spacious lounge/diner with a bay window overlooking the development, a modern kitchen with a window and space for appliances, two well-proportioned bedrooms, and a stylish bathroom.

The development enjoys well-maintained communal grounds, and the apartment benefits from an allocated parking space along with ample visitor parking.







TOTAL APPROX. FLOOR AREA 540 SQ.FT. (50.1 SQ.M.)

Whilst every attempt has been made to ensure the accuracy of the floor plan contained here, measurements of doors, windows, rooms and any other items are approximate and no responsibility is taken for any error, omission, or mis-statement. This plan is for illustrative purposes only and should be used as such by any prospective purchaser. The services, systems and appliances shown have not been tested and no guarantee as to their operability or efficiency can be given  
Made with Metropix ©2018

Energy Efficiency Rating		Current	Potential
Very energy efficient - lower running costs			
(92 plus) A			
(81-91) B			
(69-80) C			
(55-68) D			
(39-54) E			
(21-38) F			
(1-20) G			
Not energy efficient - higher running costs			
England & Wales		EU Directive 2002/91/EC	
Environmental Impact (CO <sub>2</sub> ) Rating		Current	Potential
Very environmentally friendly - lower CO <sub>2</sub> emissions			
(92 plus) A			
(81-91) B			
(69-80) C			
(55-68) D			
(39-54) E			
(21-38) F			
(1-20) G			
Not environmentally friendly - higher CO <sub>2</sub> emissions			
England & Wales		EU Directive 2002/91/EC	

#### PROPERTY MISDESCRIPTIONS ACT 1991

The agent has not tested any apparatus, equipment, fixtures and fittings, or services, so cannot verify that they are in working order or fit for their purpose or within ownership of the seller, therefore the buyer must assume the information given is incorrect. References to the Tenure of the property are based on information supplied by the Vendor. The agents have not had sight of the title documents. The buyer is advised to obtain verification from their Solicitor. The measurements supplied are for general guidance and as such must not be relied on as fact. Nothing concerning the type of construction or the condition of the structure is to be implied from the photograph of the property. The sales particulars may change in the course of time, and any interested party is advised to make a final inspection of the property prior to exchange of contracts.

[morgan-alexander.co.uk](http://morgan-alexander.co.uk)



40 Castle Street, Hertford, Herts, SG14 1HH  
Tel: 01992 248028  
[westley@morgan-alexander.co.uk](mailto:westley@morgan-alexander.co.uk)