

Home Lodge Hillside Lane
Ware, SG12 9SE
Guide price £1,300,000

ma
morgan alexander





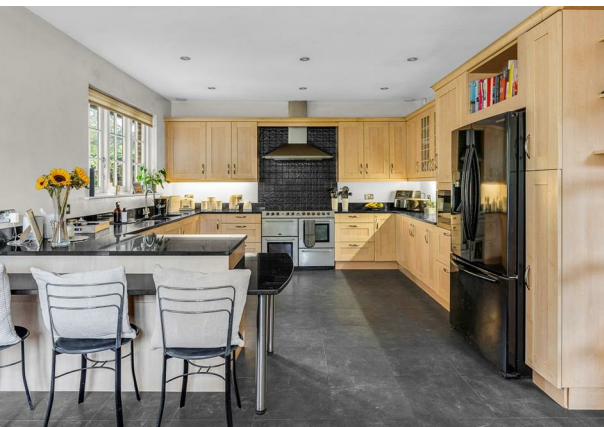
Home Lodge Hillside Lane Ware, SG12 9SE

Highlights:

- Approx. 2,487 sq ft of light, versatile family accommodation
- Gated entrance with ample parking
- Landscaped gardens with terraces, lawns, and mature planting
- Spacious living room with fireplace and garden access
- Dual-aspect kitchen/dining room with patio doors and garden views
- Separate family room with bay window, shutters, and seat
- Home office, cloakroom/WC, and striking inner hallway/library with original staircase
- Three large doubles upstairs: principal and guest with en-suites, plus family bathroom and WC
- Generous outbuilding for gym/studio, guest suite, or annex (STPP)
- Flexible footprint with potential for reconfiguration

The House:





FOR ILLUSTRATIVE PURPOSES ONLY. NOT TO SCALE
Whilst every attempt has been made to ensure the accuracy of the floor plan shown, all measurements, positioning, fixtures, features, fittings and any other data shown are approximate interpretation for illustrative purposes only and are not to scale. No responsibility is taken for any error, omission, miss-statement or use of data shown.
Property marketing provided by www.matthewkyle.co.uk

Energy Efficiency Rating			Environmental Impact (CO ₂) Rating		
	Current	Potential		Current	Potential
Very energy efficient - lower running costs			Very environmentally friendly - lower CO ₂ emissions		
(92 plus) A			(92 plus) A		
(81-91) B			(81-91) B		
(69-80) C			(69-80) C		
(55-68) D			(55-68) D		
(39-54) E			(39-54) E		
(21-38) F			(21-38) F		
(1-20) G			(1-20) G		
Not energy efficient - higher running costs			Not environmentally friendly - higher CO ₂ emissions		
England & Wales	EU Directive 2002/91/EC		England & Wales	EU Directive 2002/91/EC	

PROPERTY MISDESCRIPTIONS ACT 1991

The agent has not tested any apparatus, equipment, fixtures and fittings, or services, so cannot verify that they are in working order or fit for their purpose or within ownership of the seller, therefore the buyer must assume the information given is incorrect. References to the Tenure of the property are based on information supplied by the Vendor. The agents have not had sight of the title documents. The buyer is advised to obtain verification from their Solicitor. The measurements supplied are for general guidance and as such must not be relied on as fact. Nothing concerning the type of construction or the condition of the structure is to be implied from the photograph of the property. The sales particulars may change in the course of time, and any interested party is advised to make a final inspection of the property prior to exchange of contracts.

morgan-alexander.co.uk



40 Castle Street, Hertford, Herts, SG14 1HH
Tel: 01992 248028
westley@morgan-alexander.co.uk