

20 Hamburgh Court
Waltham Cross, EN8 0UL
Guide price £255,000

ma
morgan alexander





20 Hamburgh Court Waltham Cross, EN8 0UL

Step inside to a welcoming entrance hall leading to a bright lounge/dining room with an attractive bay window—a lovely spot to relax or entertain—with open access to the fitted kitchen for effortless everyday living. The thoughtful layout continues with a generous main bedroom featuring a walk-in wardrobe, a well-proportioned guest bedroom, and a modern bathroom finished for both style and practicality.

Outside, the property enjoys the rare benefit of allocated parking, while the peaceful setting keeps you tucked away from the bustle yet moments from the excellent amenities of Brookfield Retail Park.

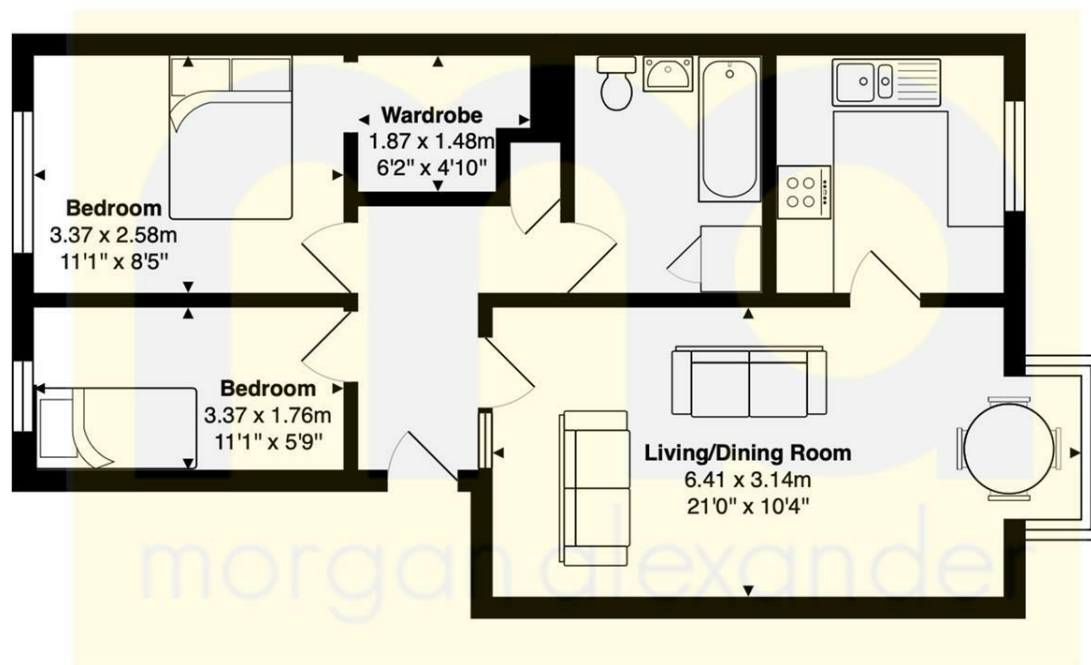
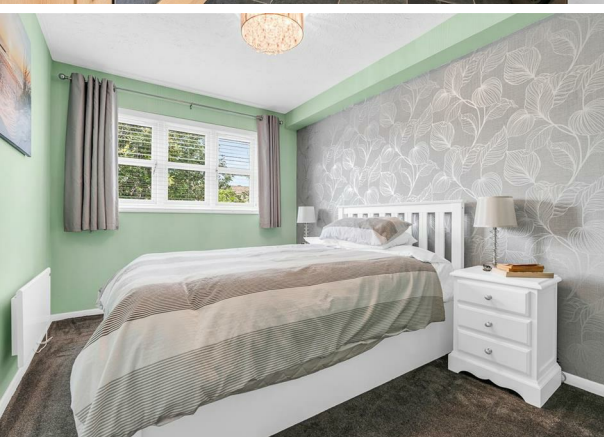
At a glance

Two bedrooms

Lounge/dining room with bay window

Fitted kitchen off the reception room





Second Floor
Area: 56.0 m² ... 603 ft²

FOR ILLUSTRATIVE PURPOSES ONLY. NOT TO SCALE
Whilst every attempt has been made to ensure the accuracy of the floor plan shown, all measurements, positioning, fixtures, features, fittings and any other data shown are an approximate interpretation for illustrative purposes only and are not to scale. No responsibility is taken for any error, omission, miss-statement or use of data shown.
Property marketing provided by www.matthewkyle.co.uk

Energy Efficiency Rating		Current	Potential
Very energy efficient - lower running costs			
(92 plus) A			
(81-91) B			
(69-80) C			
(55-68) D			
(39-54) E			
(21-38) F			
(1-20) G			
Not energy efficient - higher running costs			
England & Wales		EU Directive 2002/91/EC	

Environmental Impact (CO ₂) Rating		Current	Potential
Very environmentally friendly - lower CO ₂ emissions			
(92 plus) A			
(81-91) B			
(69-80) C			
(55-68) D			
(39-54) E			
(21-38) F			
(1-20) G			
Not environmentally friendly - higher CO ₂ emissions			
England & Wales		EU Directive 2002/91/EC	

PROPERTY MISDESCRIPTIONS ACT 1991

The agent has not tested any apparatus, equipment, fixtures and fittings, or services, so cannot verify that they are in working order or fit for their purpose or within ownership of the seller, therefore the buyer must assume the information given is incorrect. References to the Tenure of the property are based on information supplied by the Vendor. The agents have not had sight of the title documents. The buyer is advised to obtain verification from their Solicitor. The measurements supplied are for general guidance and as such must not be relied on as fact. Nothing concerning the type of construction or the condition of the structure is to be implied from the photograph of the property. The sales particulars may change in the course of time, and any interested party is advised to make a final inspection of the property prior to exchange of contracts.

morgan-alexander.co.uk



40 Castle Street, Hertford, Herts, SG14 1HH
Tel: 01992 248028
westley@morgan-alexander.co.uk