

25 The Carriages, Station Road
Ware, SG12 9PL
Guide price £380,000





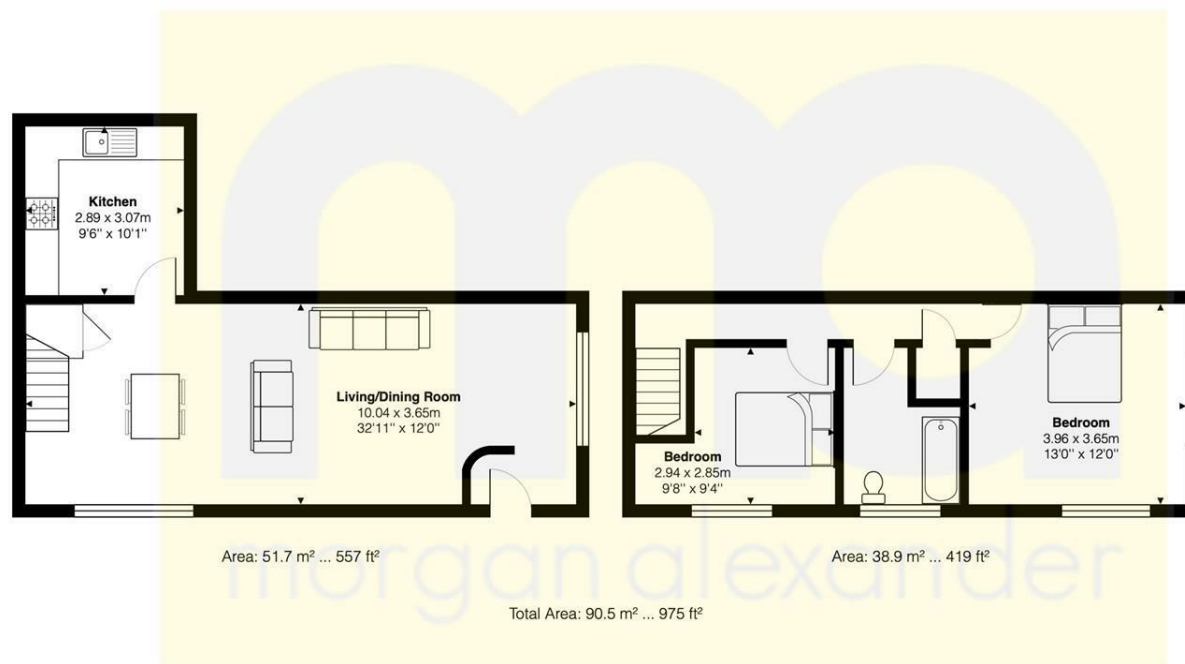
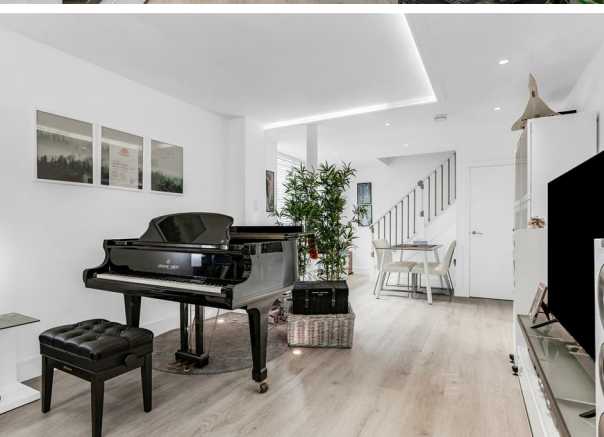
25 The Carriages, Station Road Ware, SG12 9PL

Ultimate warehouse Style apartment with two double bedrooms . This is a unique opportunity to secure one of Ware's most PRESTIGIOUS converted apartments positioned in the heart of the town centre.

The beautifully presented accommodation features an open-plan living/dining room, perfect for entertaining and relaxing, a stylish kitchen equipped with modern appliances, two double bedrooms boasting impressive large arched windows that flood the rooms with natural light, and a luxury bathroom fitted with high-quality fixtures.

This unique property benefits from private access, ensuring a sense of exclusivity, allocated parking for your convenience, and the significant advantage of being within close proximity to the mainline station, ideal for commuting.





FOR ILLUSTRATIVE PURPOSES ONLY. NOT TO SCALE
Whilst every attempt has been made to ensure the accuracy of the floor plan shown, all measurements, positioning, fixtures, features, fittings and any other data shown are an approximate interpretation for illustrative purposes only and are not to scale. No responsibility is taken for any error, omission, miss-statement or use of data shown.
[Property marketing provided by www.matthewkyle.co.uk](http://www.matthewkyle.co.uk)

Energy Efficiency Rating		Current	Potential
Very energy efficient - lower running costs			
(92 plus) A			
(81-91) B			
(69-80) C			
(55-68) D			
(39-54) E			
(21-38) F			
(1-20) G			
Not energy efficient - higher running costs			
England & Wales		EU Directive 2002/91/EC	
Environmental Impact (CO ₂) Rating		Current	Potential
Very environmentally friendly - lower CO ₂ emissions			
(92 plus) A			
(81-91) B			
(69-80) C			
(55-68) D			
(39-54) E			
(21-38) F			
(1-20) G			
Not environmentally friendly - higher CO ₂ emissions			
England & Wales		EU Directive 2002/91/EC	

PROPERTY MISDESCRIPTIONS ACT 1991

The agent has not tested any apparatus, equipment, fixtures and fittings, or services, so cannot verify that they are in working order or fit for their purpose or within ownership of the seller, therefore the buyer must assume the information given is incorrect. References to the Tenure of the property are based on information supplied by the Vendor. The agents have not had sight of the title documents. The buyer is advised to obtain verification from their Solicitor. The measurements supplied are for general guidance and as such must not be relied on as fact. Nothing concerning the type of construction or the condition of the structure is to be implied from the photograph of the property. The sales particulars may change in the course of time, and any interested party is advised to make a final inspection of the property prior to exchange of contracts.

morgan-alexander.co.uk



40 Castle Street, Hertford, Herts, SG14 1HH
Tel: 01992 248028
westley@morgan-alexander.co.uk